

Pulley Man PM300-600

Pulley Man



Product specifications:

- Light weight and portable
- Suitable to lift loads up to 600 kg (PM600)
- Suitable to pull loads up to 3000 kg
- No electricity needed
- Easy to set up with suspension hook
- Can be used with a cordless drill and power drill
- Possible to rotate the load 360°
- Can be used in 3 positions
- Standard rope length 12 meters (possible up to 50 meters)
- Patented self-braking reduction brake
- In compliance with EN14492-2, EN ISO 12100
- Paint thickness is 100 micron in 1 layer and in compliance with DIN/ISO 12944
- Paint classification C1M - RAL7035 (grey)
- prices: on request

Suitable for any light work such as:

- Maintenance
- Lifting work at a construction site
- Repairs
- Installations
- Jobs around the house

Options:

Available in complete kit including:

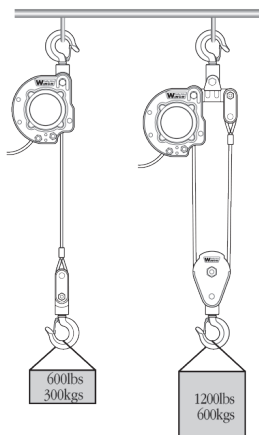
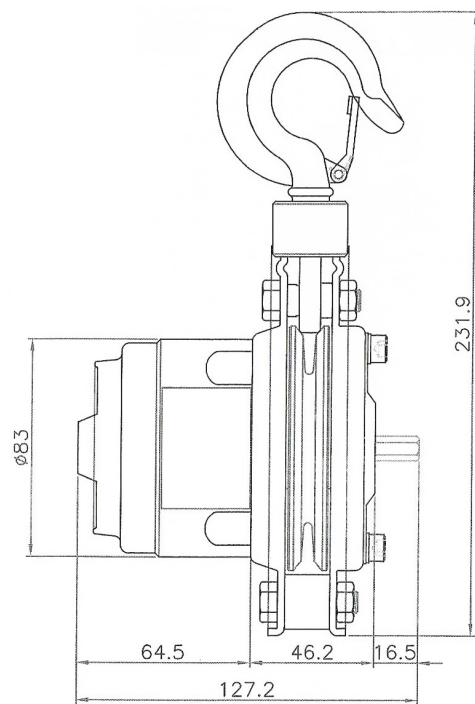
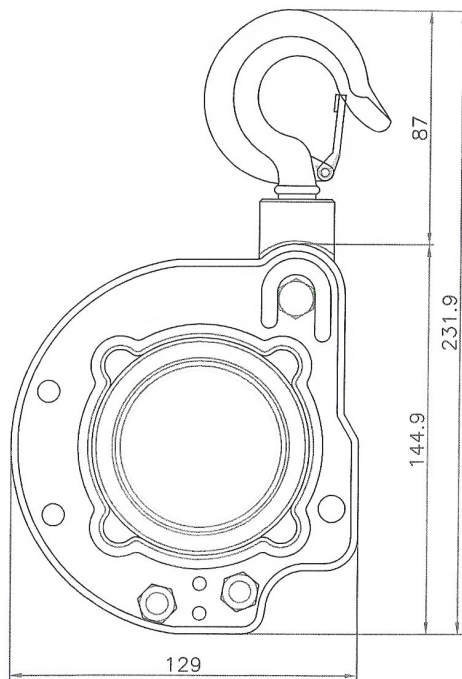
- Robust case with foam
L: 457 W: 367 H: 183 - Brand: Explorer case
- Cordless drill 18V - 70 Nm - Brand: Hikoki
- 2 Li-ion batteries 18V - 2,5 Ah - Brand: Hikoki
- 1 charger - Brand: Hikoki
- 2 shackles type G-210 - Brand: Crosby
- 1 sling, length 1 m

GEBUWIN
metal products

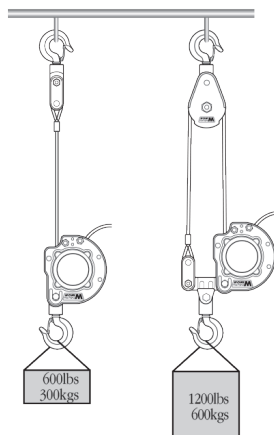
Industrieweg 6, 7102 DZ Winterswijk, The Netherlands
Telephone: +31(0)543 532600 Email: info@gebuwin.com
For more information: www.gebuwin.com



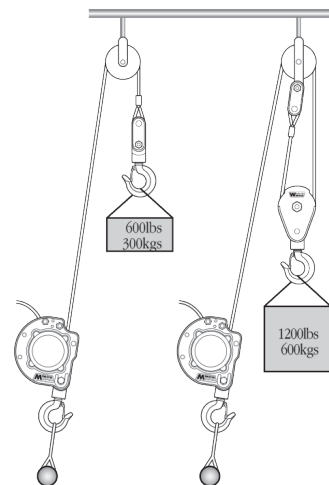
Technical specifications PM300-600



Position 1: Fixed Pulley Man



Position 2: Fixed wire hook



Position 3: Fixed Pulley Man on ground

Technical specifications		PM300	PM600
Lifting capacity	kg (lbs)	300 (660)	600 (1322)
Pulling capacity (load on wheels, 6° sope)	kg (lbs)	1500 (3300)	3000 (6600)
Pulling capacity (load on wheels, 35° sope)	kg (lbs)	450 (990)	900 (2000)
Number of falls	n°	1	2
Line speed (no load)	m/min	6	3
Line speed (full load)	m/min	3,75	8
Wire rope diameter	mm	4,76	4,76
Standard rope length with hook	m	12	12
Weight excl. rope	kg (lbs)	3,8 (8,4)	4,1 (9)
Weight incl. rope	kg (lbs)	5,7 (12,5)	6 (13,2)
Weight complete kit	kg (lbs)	9,5 (20,9)	10 (22)

subject to changes

For more information: www.gebuwin.com